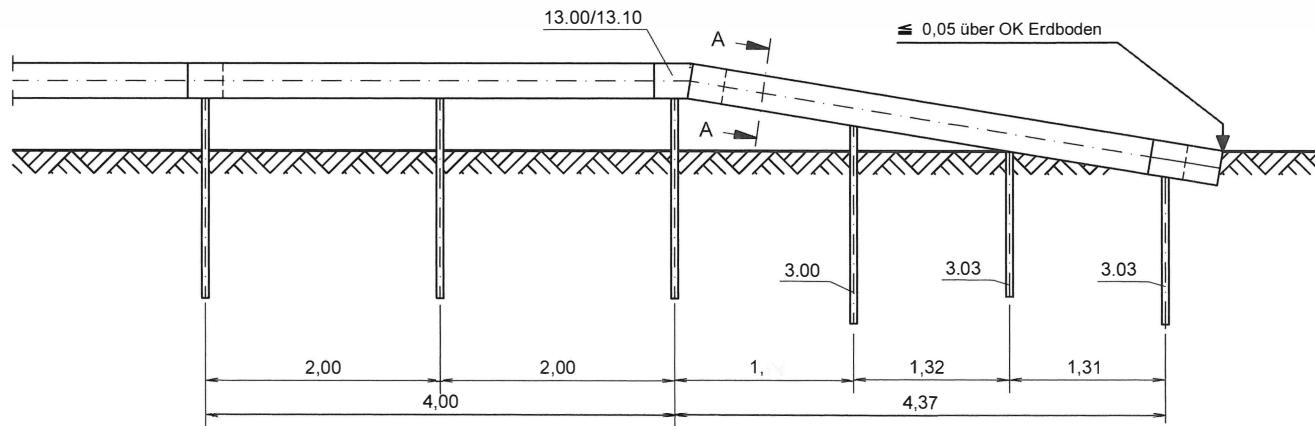
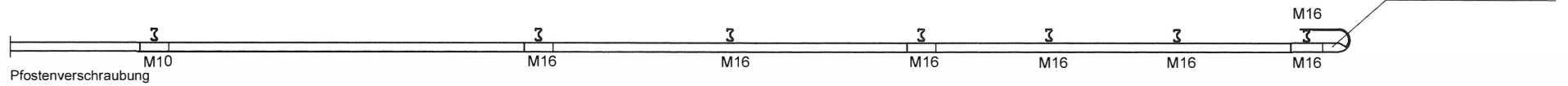
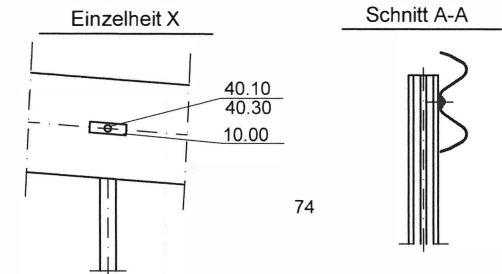


\* Bei Systempfostenabstand 2.0m 1 Zusatzpfosten erforderlich



Profil B sinngemäß ausführen



Zchg. Nr. S4.1-110

Stand: Sept. 2019

### ESP Absenkungen

DIN V ENV 1317-4

P2A- x1/y1- Z1- A



Gütegemeinschaft Stahlschutzplanken e.V.