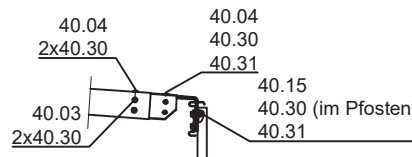
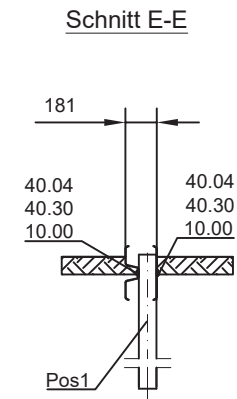
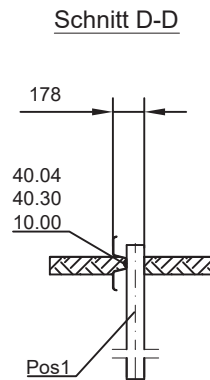
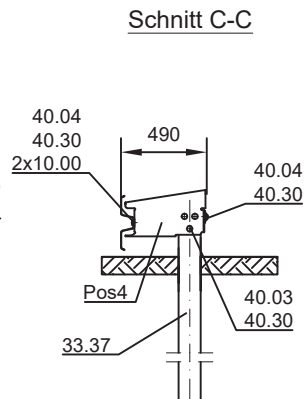
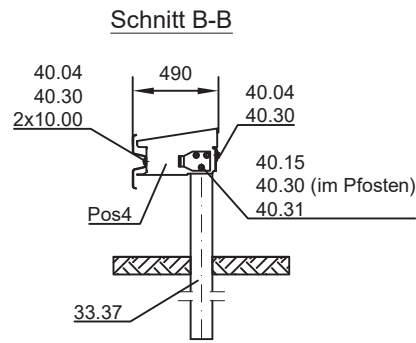
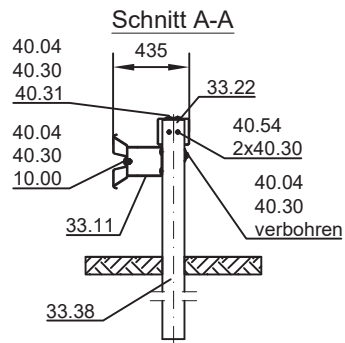
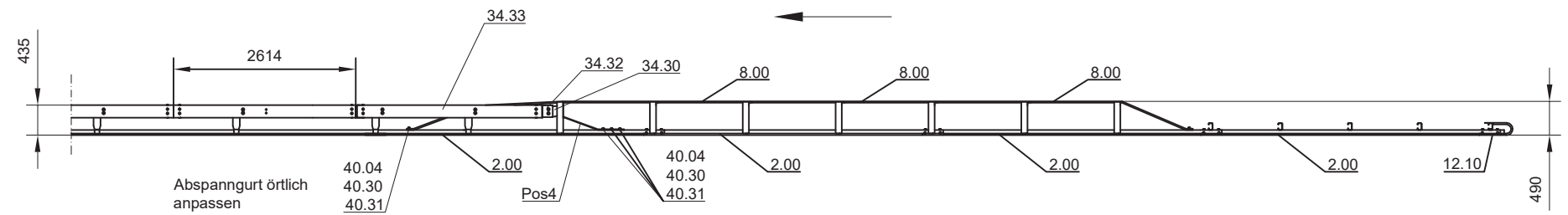
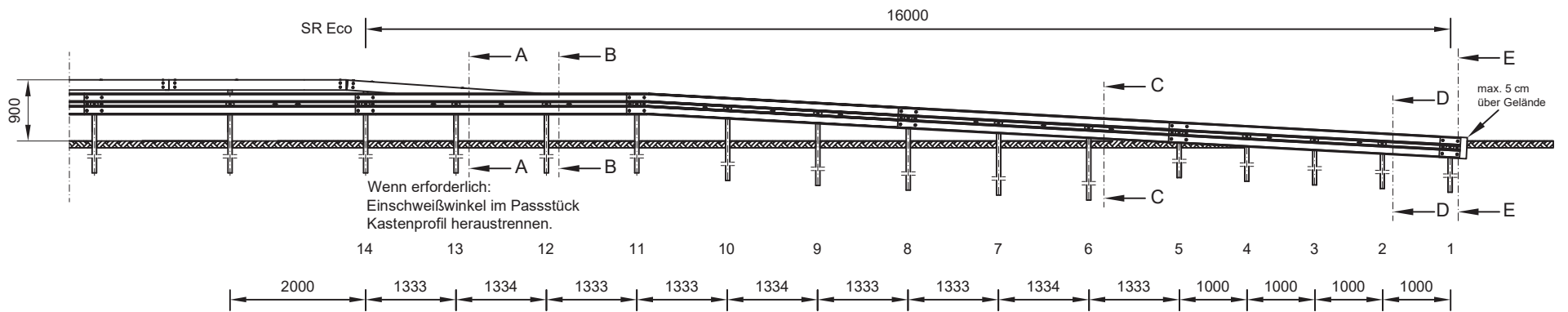


**Verschraubung KP-Endverankerung**

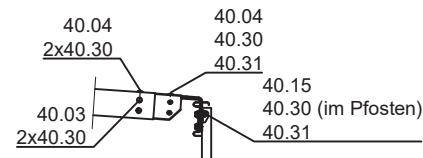


Alle weiteren Stoßverschraubungen:  
Holm A: je 8 40.00 + 40.30  
Kastenprofil: je 12 x (40.03 + 2x40.30)  
Abspanngurt: je 2 x 40.03 + 40.30

|  |   |                |            |
|--|---|----------------|------------|
|  | AEK für SR Eco  | Zeichnung      |            |
|  | Absenkung HSEnd H2 16 m<br>AK - rechter Fahrbahnrand - Profil A | H+S 17-5-1.10  |            |
|  | Copyright: H+S Verkehrstechnik, Duisburg                        | Einheit: mm    | Stand      |
|  |   | Gezeichnet: HB | 20.12.2017 |



**Verschraubung KP-Endverankerung**



Alle weiteren Stoßverschraubungen:  
 Holm B: je 6 40.00 + 40.30  
 Kastenprofil: je 12 x (40.03 + 2x40.30)  
 Abspanngurt: je 2 x 40.03 + 40.30

|  |   |                |            |
|--|---|----------------|------------|
|  | AEK für SR Eco  | Zeichnung      |            |
|  | Absenkung HSEnd H2 16 m<br>AK - rechter Fahrbahnrand - Profil B | H+S 17-5-1.5   |            |
|  |   | Einheit: mm    | Stand      |
|  | Copyright: H+S Verkehrstechnik, Duisburg                        | Gezeichnet: HB | 20.12.2017 |