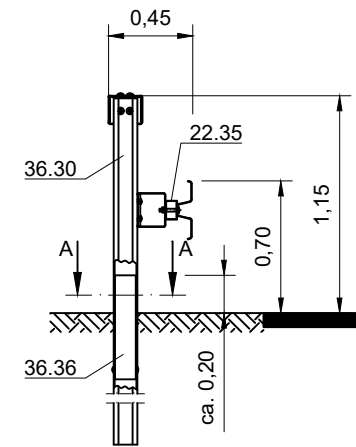
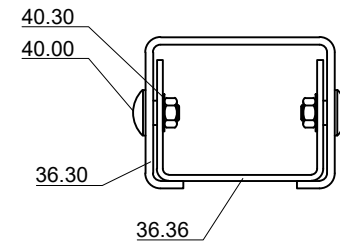



Verschraubung siehe B1.1-602

Profil A sinngemäß ausführen



Schnitt A-A



Zchg. Nr. <b>S1.1-600</b>	<b>SUPER-RAIL HS</b>	DIN EN 1317-2	
Stand: Dez. 2020		H2 / L2 - W3 - B H4b / L4b - W4 - B	
Gütegemeinschaft Stahlschutzplanken e.V.		Profil A: 88,8 kg/m Profil B: 87,8 kg/m	